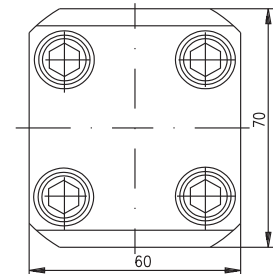
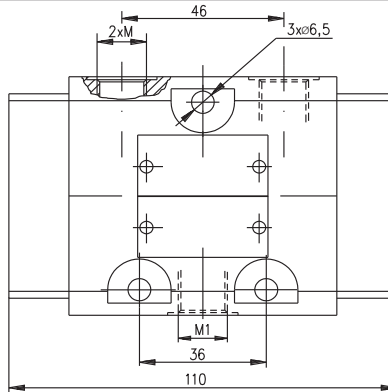
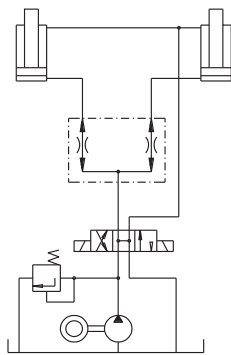


**DESCRIPTION**

- ✓ Dividing and combining valves for pipe mounting-KDS-.....
- ✓ The dividing and combining valves are designed to separate the flow in the hydraulic system on two equal passages which pass equally in the return line. In that way synchronized movement is obtained for operating the actuator in both directions.

**DIMENSIONS**


TYPE	M	M1
KDS-10	M14x1,5	M14x1,5
KDS-40	M18x1,5	M22x1,5

**APPLICATIONS**

**ORDERING CODE**

KDS	-	***	***
-----	---	-----	-----

Dividing and combining valve

Nominal bore:

10mm - 10

40mm - 40

Flow rate range: bore size - 10

5...7 l/min - A

7...12 l/min - B

12...16 l/min - C

bore size - 40

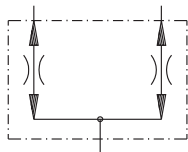
16...21 l/min - A

21...28 l/min - B

28...37 l/min - C

37...49 l/min - D

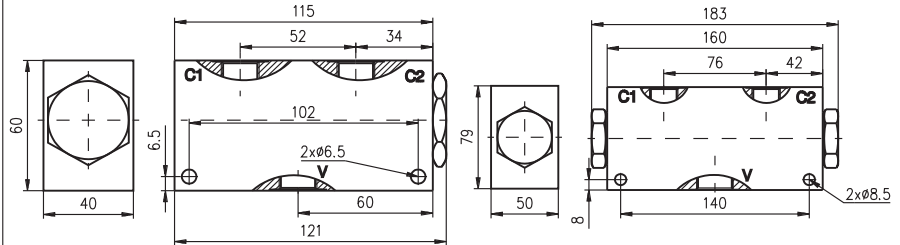
49...63 l/min - E

**SYMBOL**

**TECHNICAL DATA**

Max. Pressure		320 bar
Rated flow (Dp=2,5 bar.)	KDS-10A	5...7 l/min
	KDS-10B	7...12 l/min
	KDS-10C	12...16 l/min
	KDS-40A	16...21 l/min
	KDS-40B	21...28 l/min
	KDS-40C	28...37 l/min
	KDS-40D	37...49 l/min
	KDS-40E	49...63 l/min
Accuracy - ΔQ		±4%
Working liquid-hydraulic oils with characteristics:		
-viscosity		10...400 cSt
-degree of filtration		0,025 mm
-temperature		-20...+80°C

**DESCRIPTION**

✓ Dividing and combining valves for pipe mounting-FDC.....-...  
 ✓ The dividing and combining valves are designed to separate the flow in the hydraulic system on two equal passages which pass equally in the return line. In that way synchronized movement is obtained for operating the actuator in both directions.

**DIMENSIONS**


TYPE FDC10	V	C1	C2
FDC10 38-12	G3/8"	G3/8"	G3/8"
FDC10 38-24	G3/8"	G3/8"	G3/8"
FDC10 12-40	G1/2"	G3/8"	G3/8"

TYPE FDC20	V	C1	C2
FDC20 34-90	G3/4"	G1/2"	G1/2"
FDC20 100-150	G1"	G3/4"	G3/4"

**ORDERING CODE**


Dividing and combining valve

Modifications:

-10

-20

Connection "V" threads:

G3/8"-38

G1/2"-12

G3/4"-34

G1"-100

Flow rate range: modification - 10

4...12 l/min - 12

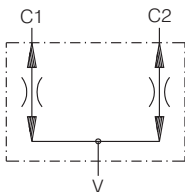
12...24 l/min - 24

24...40 l/min - 40

modification - 20

40... 90 l/min - 90

80...150 l/min - 150

**SYMBOL**

**TECHNICAL DATA**

Max. Pressure		210 bar
Input flow	FDC10 38-12	4...12 l/min
	FDC10 38-24	12...24 l/min
	FDC10 12-40	24...40 l/min
	FDC20 34-90	40... 90 l/min
	FDC20 100-150	80...150 l/min
Accuracy at pressure diff. 12 MPa between C1 and C2 - ΔQ		±5%
Working liquid-hydraulic oils with characteristics:		
-viscosity		10...400 cSt
-degree of filtration		0,025 mm
-temperature		-20...+80°C